



Taiyaba Enterprises



Interior Decorator

False ceiling
Gypsum Board



Drywall Partition

Company Profile



Steel Building

Solid Wall Partition



Cemented
Drywall
Partition

A-48/A Ground Floor Phase -1, near Star
Apartment, Vijay Vihar Rohini Sec.-5, New
Delhi-110085



E_Mail

islamsaifi90@gmail.com



Contact:-

[+919250060750](tel:+919250060750)

[+919211778617](tel:+919211778617)

Table of Content

Company Overview	2
Service	4
Strategic Statements	4
Portfolio	6
Residential	6
Commercial	8
Overview Interior Decorators.....	13
Overview False Ceiling & Drywall Partition	14
Overview Steel Building	15
Grid Ceiling Overview	16
Overview Solid wall	17
About Owner	18
Personal Detail	18
Education	19
Technical Skills	19
About Team	20
Registration	21

Company Overview

The Taiyaba Enterprises company start in 2010 as a small firm specializing in Interior Design, Fabricator steel building and hut house, as well as **(Wood work, Gypsum work, Exterior work, Steel Building, rooftop solid wall partition)**, Taiyaba Enterprises offers a comprehensive range of Interior Design, Fabricator steel building and hut house design services and a broad collection of custom-designed furniture and lighting products. Committed to architectural integrity and accomplished in a broad scope of design styles, Storm is celebrated for its fresh interpretations of living and working environments that address client vision and functionality. Neither pure traditionalists nor modernists, the Taiyaba team dispenses with aesthetic agendas and offers uniquely tailored solutions that balance progressive design and traditional sensibilities.

The head office of our company, situated in New Delhi (Rohini Vijay Vihar), has been involved in projects not just locally, but also abroad. The company, headed by **Mr. Islam Saifi** who has more than 10 Ten years of exceptional and experience in the field of Interior Design, Fabricator steel building and hut house, Design and Project Management.

Mr. Islam has also lectured in the aforementioned at accredited institutions in New Delhi and in the Rohini, and has achieve excellence work.

The Taiyaba Enterprises design (JW Mariate, Pull Man, Lemon Tree, Bude) from Five Star Hotels, Commercial and Retail design, Sport and Recreational facilities, Hospitals(Mad city, Max), Schools(dharam Samaj Degree College), Tertiary Institutions, Executive Offices(JP Green vally) and Up-marketResidential Developments.

National projects, as completed in The Delhi, Kolkata, Mumbai, Jaipur, Raigarh, Dehradoon, UP, Etc. range from a (JW Mariate, Pull Man, Lemon Tree, Bude) Hotel, Executive Offices and Luxury Apartments.

Projects Interior Design, Fabricator steel building and hut house, as well as interior design This concept establishes a point of view that runs throughout the space, whether referenced to the construction of a lighted suspended ceiling or to a fine detail in the hardware of a walnut cabinet. The carefully considered synthesis of functional space planning, color and texture, proportion, scale and lighting, is Taiyaba Enterprises design principles and enhanced by service built on close client collaboration and responsiveness.

Mr. Islam was also privilege in being part of various projects for the Department of Public Works, which range from schools, clinics and hospitals. He has a clear insight in the challenges facing the Department of Public Works.

The Taiyaba Enterprises strongly believes in playing an important part in creating a sustainable, economic viable and environment friendly solution to the challenges facing our beautiful country.

Project Management and whilst doing this, he had the opportunity to work with top class individuals in the field of technology in Delhi. Mr. Islam was also privilege in being part of various projects for the Department of Public Works, He has a clear insight in the challenges facing the Department of Public Works.

Service

His objective is to achieve ultimate professional excellence in the field of Interior Design, Fabricator steel building and hut house Design through creative and result orientated approach, hard work, self-motivation, -determination and teamwork. The Taiyaba Enterprises has a proven track record of the following architectural skills:

- Strong in managing all technical aspects of a project, from clients brief to Final Hand Over.
- Ability to produce high standard drawings, design reviews and manage design as well as to mentor staff.
- Liaise effectively with consultants, sub-contractors and suppliers to bring the project together on-time to the highest quality and on budget.
- Good technical knowledge of FF&E items and manufacturing.
- Detailed knowledge of suppliers, manufacturers and products available in the National marketplace.
- Ability to develop excellent interpersonal relationships with clients, design team, suppliers and manufacturers.
- Successful in delivering, managing FF&E selections and procurement on time and within budget.

Strategic Statements

Vision

The vision of the business can be summarized as:
“Creating meaningful, sustainable, environmentally friendly spaces”

Mission

The mission of the business can be summarized as:

- To be leaders in the fields of Interior Design and Fabricator steel building hut house.
- To always provide a professional service.
- To provide clients with choice according to their individual needs.

Values

The business is established on the following core values:

- Honesty.
- Transparency.
- Professionalism.
- High standard of ethics.
- Confidentiality.

Services

Interior Design, Fabricator steel building and hut house Design Space Planning

- ❖ Re-modeling
- ❖ Drawings and specifications
- ❖ Color and finish consultation
- ❖ Storm Custom Design:
- ❖ Cabinetry
- ❖ Molding
- ❖ Flooring
- ❖ Lighting
- ❖ Bathroom
- ❖ Kitchen
- ❖ Ceiling
- ❖ Fireplace

Interior Furnishings

- ❖ Selection:
- ❖ Fabric and furniture
- ❖ Custom wall finishes
- ❖ Decorative lighting
- ❖ Art & accessories

Taiyaba Design:

- ❖ Furniture
- ❖ Window treatments
- ❖ Lighting
- ❖ Carpets
- ❖ Bedding

EXTERIOR

- ❖ Space Planning
- ❖ Fabric and furniture selection
- ❖ Hardscape/finish material selection
- ❖ Softscape indication
- ❖ Firepit /BBQ design

BUDGETS / PURCHASING / INSTALLATION

- ❖ Maintain budgets
- ❖ Order processing
- ❖ Merchandise pricing and inspection
- ❖ Installation

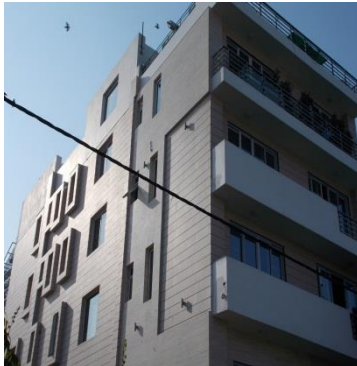
Delivery: - Delivery of use items by Taiyaba Enterprises.

Portfolio

As mentioned previously, The Taiyaba Enterprise portfolio ranges from Five Star Hotels, Commercial and Retail design, Recreational facilities, Hospitals, Schools, Tertiary Institutions, Executive Offices and Up-market Residential Developments. National projects, as completed in The New Delhi, range from a (JW Mariate, Pull Man, Lemon Tree), Executive Offices and Luxury Apartments. Below are some examples of previous work:

RESIDENTIAL

- EXCLUSIVE RESIDENTIAL DEVELOPMENT – DELHI-INDIA-(2010-2011)



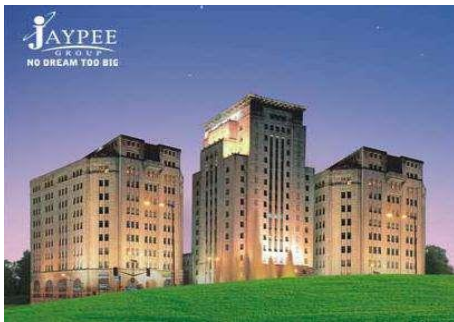
This exclusive residential development is designed in a Delhi India, which was requested by the developer. The houses were specifically designed for each individual home owner. The challenge was therefore to comply with each of the owner's specific needs and still remain within the developer's requirements regarding style, costs and time schedule.

- HOUSE FOURIE – GURGAUN (HARYANA) – INDIA (2010)



This exclusive up-market residence was designed and built for one of India richest business man, situated on Gurgaon Sec.-56. It Work Exterior, Solid Wall Partition, Glass, Flooring Stone and wooden sealing Dome Heritage Site. The materials used on this project were from the highest quality and a lot of attention was given to detail

- J.P. GREEN VALLY VOST TOWN-NOIDA-U.P.



This J.P. GREEN VALLY VOST TOWN-NOIDA-U.P. 2010-011 Date work is Gypsum Drywall partition wall cladding, wooden work Almeria and wooden table. The materials used on this project were from the highest quality and a lot of attention was given to detail

COMMERCIAL

- MCD BUILDING-CIVIX CENTER –NEW DELHI



This MCD Building –Civix’ center. The Work in total 28 floors situated in New Delhi. Work Server room and Meeting hall (Center Table, Elmira, locker and Flush Door) like Drywall Partition, Grid ceiling, False Ceiling Gypsum Board and Wooden work The materials used on this project were from the highest quality and a lot of attention was given to detail

- E.I.L. LTD COMPANY –GURGAON-HARYANA



E.I.L. LTD Company in Gurgaon Sec.-16 . Work Like Drywall Partition, False Ceiling Gypsum Board Arm Strong Grid Ceiling office area, False Ceiling Gypsum Board main lift lobby, Corridor area and Grid ceiling service lift lobby pantry Toilet lobby, Server room Handicap toilet, Generator room, Metal Grid ceiling. The materials used on this project were from the highest quality and a lot of attention was given to detail

- MAX HOSPITAL –HASAN PURE-NEW DELHI



This MAX HOSPITAL –HASAN PURE-NEW DELHI Work 2009 Date work are Gyprock Drywall partition, Gypsum, Room Drywall partition, toilet. Handicap toilet drywall partition and corridor partition. The materials used on this project were from the highest quality and a lot of attention was given to detail

- MEDI CITY HOSPITAL –GURGAON-HARYANA



This MEDI CITY HOSPITAL –GURGAON-HARYANA Work Drywall partition, gypsum sealing, wall lining and shaft drywall cladding. The materials used on this project were from the highest quality and a lot of attention was given to detail

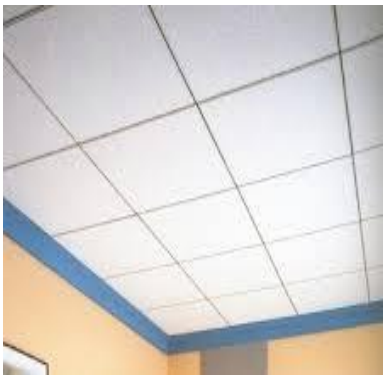
- MCD RESTURENT RAJESTHAN



This McDonald RESTURENT RAJESTHAN Work Drywall partition, False Ceiling Gypsum Board , Grid ceiling, wooden flooring and Reception wooden wall cladding. The materials used on this project were from the highest quality and a lot of attention was given to detail



- BAJAJ BIKE's AGENCY-MEERUT-U.P.



This BAJAJ BIKE's AGENCY-MEERUT-U.P. Work False Ceiling Gypsum Board, Armstrong Grid ceiling Wooden rack Almeria and Wooden wall lining. The materials used on this project were from the highest quality and a lot of attention was given to detail

- REEBOK SHOWROOM –CANUGHT PLACE-DELHI



This REEBOK SHOWROOM –CANUGHT PLACE-DELHI work False Ceiling Gypsum Board and wooden work and flooring Stone tile 2/2. The materials used on this project were from the highest quality and a lot of attention was given to detail

- BLUE BOND SHOWROOM ROHINI NEW DELHI



The BLUE BOND SHOWROOM Working 2009 Wooden work, False Ceiling Gypsum Board and stone flooring tile. The materials used on this project were from the highest quality and a lot of attention was given to detail

- STUDENT ACCOMMODATION AMITY UNIVERSITY-NOIDA-U.P.



The STUDENT ACCOMMODATION-AMITY UNIVERSITY worked in 2008. Paint-polish, False Ceiling Gypsum Board and wooden student table. The materials used on this project were from the highest quality and a lot of attention was given to detail

- OFFICE ROOFTOP OKHLA PHASE-II



This OFFICE ROTOF OKHLA PHASE-II Near Modi Mel Work Solid wall partition External and Internal partition. The materials used on this project were from the highest quality and a lot of attention was given to detail

Overview Interior Decorators

Interior designers are creative, imaginative and artistic. They also need to be disciplined, organized and skilled business people. Combining knowledge with aesthetic vision, interior designers work with clients and other design professionals to develop design solutions that are safe, functional, and attractive and meet the needs of the people using the space.

As members of a service profession, interior designers' fortunes depend on their ability to satisfy clients. Thus, they must understand artistic and technical requirements of a project, interpersonal communication, and management strategies.

Example of Home Room



This bold living room Design by Taiyaba Enterprises Use wallpaper Depend on customer requirement achieves a contemporary look.

Like in this Home Room image make:-

- Wooden Almeria
- Wooden Door
- Flooring Stone
- Texture paint
- wallpaper

Overview False Ceiling & Drywall Partition

- **False Ceiling**

Backed by years of industrial experience and in depth market knowledge, we are able to offer **False Ceiling from Gypsum Board**. The offered board is denser than regular plywood that is why it has been a better option for various construction and interior designing purposes. Our offered product is highly acclaimed in the market for its high durability and perfect finish. It is available in various designs and sizes to choose from.

Features:

- Strong construction
- Fascinated design
- Dimensional accuracy

- **False Ceiling & Drywall Partition from Gypsum Board**

Our clients' can avail from us an enormous range of **False Ceiling & Drywall Partition from Gypsum Board** that is known for its high strength. The offered board has uniform thickness and is widely used for making of kitchen cabinet, false ceiling, wardrobes, partitions, modular furniture, office furniture, beds, doors etc. It is also tested on various parameters by our quality controllers to ensure its flawlessness. Furthermore, we are offering the installation service of this board as per-clients,-requirements.

Features:

- Smooth finish
- Highly durable
- Elegant look

Overview Steel Building

A **steel building** is a metal structure fabricated with steel for the internal support and for exterior cladding, as opposed to steel framed buildings which generally use other materials for floors, walls, and external envelope. Steel buildings are used for a variety of purposes including storage, work spaces and living accommodation.

Strength, beauty, design freedom

Steel offers architects more design freedom in colour, texture and shape. Its combination of strength, durability, beauty, precision and malleability gives architects broader parameters to explore ideas and develop fresh solutions. Steel's long spanning ability gives rise to large open spaces, free of intermediate columns or load bearing walls. Its capacity to bend to a certain radius, creating segmented curves or free-form combinations for facades, arches or domes sets it apart. Factory-finished to the most exacting specifications under highly controlled conditions, steel's final outcome is more predictable and repeatable, eliminating the risk of on-site variability.



Work steel - Left hand 3 bedroom flat /&/ Right Sport Academy

Steel frame structure consists of beams and columns from welded H-shaped steel, hot-rolled H-shaped steel. In this frames, the beam and column system takes the gravity load such as dead and live loads. Now steel frame structure is mostly used for residential, commercial, institutional buildings all over the world.

Grid Ceiling Overview

Grid Ceiling from Gypsum Board

Intended to serve with qualitative products, we are engaged in offering an extensive gamut of **Grid Ceiling from Gypsum Board**. The offered board is manufactured using premium quality raw material and latest technology in compliance with the set industry norms. The offered board is used for various decoration purposes in housing complexes, corporate offices, and other residential buildings. The board we offer is highly acclaimed in the market for its durability and extensive design. Apart from this, we are offering the installation service of this board as per clients' requirements.

Features:

- Exquisite design
- Scratch resistance
- Dimensional accuracy

A **dropped ceiling** is a secondary ceiling, hung below the main (structural) ceiling. It may also know to as a **drop ceiling**, **T-bar ceiling**, **false ceiling**, **suspended ceiling**, **grid ceiling**, **drop in ceiling**, or **drop out ceiling** and is a staple of modern construction and architecture in both residential and commercial applications.

Grid Ceilings are a popular variety of false ceilings which not only look good, but also have excellent sound absorption qualities. Taiyaba enterprises offer a wide range of grid ceilings for every design, performance and acoustic absorption requirement. These include gypsum based metal, mineral fiber and glass wool tiles.

Overview Solid wall

- **Solid wall Partition**

In today's robotic era, time and space are being squeezed on every front. Solid Wall Partition Panels offer solutions to these constraints by providing options with a promise of Strength, Speed and Safety. Solid Wall Panels are a revolutionary dry wall solution which maintain the solid effect of a conventional brick or block wall and offers.

- **Features:**

- Quality tested
- Rugged design
- Abrasion resistance

- **Fire Rated Partition**

Depending upon its situation and function within a building, a wall may be expected to fulfill different requirements in the event of fire. Most fire rated walls used to separate buildings, enclose compartments and contain fire, will be required to provide a barrier to the passage of fire from one side or the other and must therefore be able to satisfy each of the relevant criteria (integrity, insulation and if the wall is load bearing - load bearing capacity) from either side for the prescribed period. The partitions can provide up to 6 hours of Integrity and Insulation.

- **Features:**

- Low maintenance
- Reliable operation
- Compact design

- **Hollow Wall Partition**

We are offering best quality Hollow Wall Partition to our clients, as per their requirement. These partitions are manufactured using high grade raw material and pneumatic mechanism. Our offered range finds applications in hotels, educational institutes, banks

- **Features:**

- Durability
- Reliable operation
- Low maintenance

About Owner



Islam Saifi

I am passionate about buildings and the building environment. I am of opinion that as a designer, I have a social responsibility towards not only the community, but also to the environment. Thus, it is of utmost importance for me that my designs should be sensitive to the environment as well as towards nature.

A positive aspect of this is that I have allowed myself to also be just as creative even though the client may have a very limited budget. Thus, it has often forced me to be just as creative and to produce just as creative product(s) within the realms of such a limited budget.

The exterior is just as important as the interior of a structure, and vice versa, and therefore it is important for me to excel in both these fields.

Personal Detail

Name	:	Islam Saifi
Date of Birth	:	05-June-1990
Address	:	Vijay Vihar Rohini New Delhi 110085
Nationality	:	Indian
Marital Status	:	Unmarried

Education

My education highlight includes.

- 10th complete U. P. Board 2006.
- 12th complete U.P. Board 2009.
- Graduation completes M. J. P. RohilKhand University Bareilly (2010-2012).
- Residential and Commercial Work Everest Company in Steel building And Solid Wall and dray wall partition exterior and heavy duty board.
- Saint Govind India company Dray wall partition, wall cladding and sealing.

Technical Skills

1. Strong in managing all technical aspects of a project, from clients brief to Final Hand Over.
2. Ability to produce high standard drawings, design reviews and manage design as well as to mentor staff.
3. Liaise effectively with consultants, sub-contractors and suppliers to bring the project together on time to the highest quality and on budget.
4. Good technical knowledge of FF&E items and manufacturing.
5. Detailed knowledge of suppliers, manufacturers and products available in the world marketplace.
6. Ability to develop excellent interpersonal relationships with clients, design team, suppliers and manufacturers.
7. Successful in delivering, managing FF&E selections and procurement on time and within budget.
8. Computer literate in Windows® based CAD system Micro GDS, full Microsoft Office Suite, AutoCAD and Revit.

About Team



Nijamuddeen Saifi
Project Manager

Mr. Nijamuddeen project manager handle over part of any work side take and make the good decision. Motivate the worker for better work. Handle the client side. This is an impressive & talented man of our company. It's a master of graduate.

Faheem Ahmad
Senior Side Engineer

Mr. Er. Faheem Ahmad side engineer handle of side work and make right direction of work. It's responsible of Client side work and all material. Complete civil engg. In Monad University U. P. India. The Er. Faheem briefly define work of labor for easily work.



Sakir Ahmad
Side Engineer

Mr. Er. Sakir Ahmad side engineer. Er. Sakir live in every time client-side handle of side work and make right direction of work. It's seeing of Client side work and all material. Complete civil engg. In Radha krishan Institute Monad University India. The Er. Sakir help by hand of labor for work.



Registration

I am currently registered with the following organizations:

Department of trade and taxes
Government of NCT of Delhi

Office of the value added tax officer office ward 63
Vyapar Bhavan, IP Estate. New Delhi-110002

Registration Order under DVAT & CST Act

Order No. 057841221213

Registration
TIN and User ID
07590454932